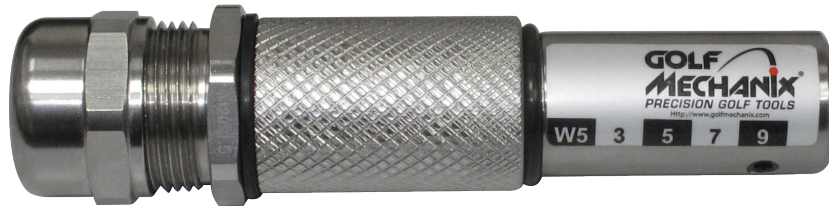


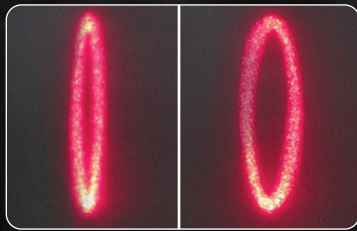


030406-HD Fit Over Adapter spinning laser HD

An original idea we turned into reality that can potentially save a lot of time and headaches for any clubmaker wanting to FLO shafts fitted with OEM adapters! These unique design fits over shaft adapters and bare shaft tips using a large capacity collet that is hand tightened to securely fasten the laser to the shaft with no backlash.



The HD model has a heavy duty Stainless steel nut to reduce the likelihood of cross threading the stem. The assembly weighs 205 grams with battery.



FLO No FLO

OPTION 030406-16G

Precision machined rings that fit tightly and effortlessly over the laser. Each ring adds 16 grams to the stack. 5 rings in total.

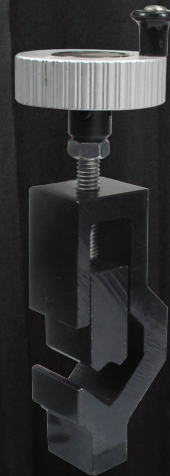
- W1 205 grms (base)
- W5 221 grms
- #3 237 grms
- #5 253 grms
- #7 269 grms
- #9 289 grms



Recommended Spares

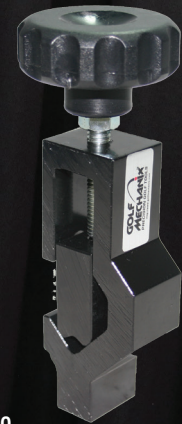


CR2 battery SP-E0703-01



170300

Torque limited shaft clamp can be bolted onto a bench or held in a vise. This clamp is rigid and will secure the shaft without loss of oscillation. The torque limiting knob eliminates the possibility of accidentally cracking a light weight graphite shafts.



170310

Economy Dial down shaft clamp can be bolted onto a bench or held in a vise. This clamp is rigid and won't dissipate shaft oscillation.